

TIPPY'S TRAIL BURNT RIVER



10 MINUTES TO
HALIBURTON VILLAGE

Heavily Treed Gently Sloping Lot,



Heavily treed lot on a year round private road that is plowed to the neighbour, the Buyer would have 100' or so to plow beyond the cottage next door!



*Brushed & Limbed to visualize
the building location & river view*



**Roughed in
Driveway &
Parking
Area**



VD
VINCE
DUCHENE

The Riverbank



From the Drone...



Top – end of the line at the dam

Bottom Pic – the bridge you can go under to canoe/kayak



Potential View from Building Site

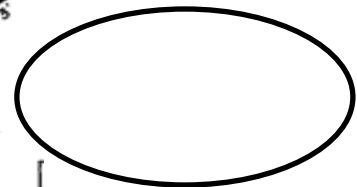
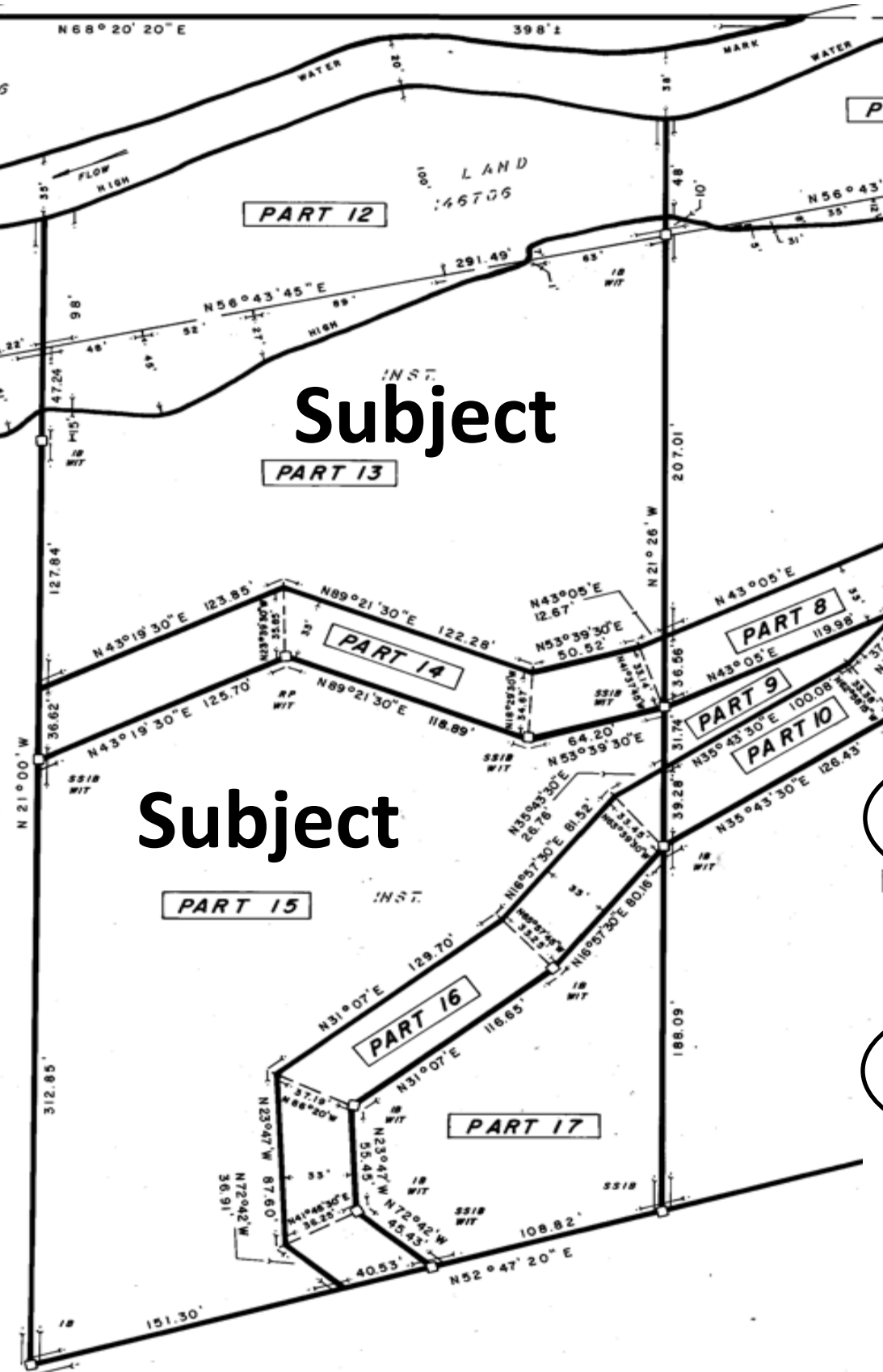


Gentle slope perfect for a walkout basement!

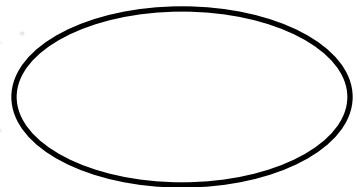


Schedule C - Survey

Parts 13 – 17, 19R-5841 Dysart with 312' w/f and 3.2 acres



Buyers Initials



Seller's Initials

Exact Location Map

Tippy's Trail, Burnt River, Donald, ON



EXPERIENCE, *It Matters!*

Location Map

Tippy's Trail, Burnt River, Donald, ON



Location From GTA

Tippy's Trail, Burnt River, Donald, ON Road

