

WELCOME TO

Osprey Road

Between Haliburton & Minden



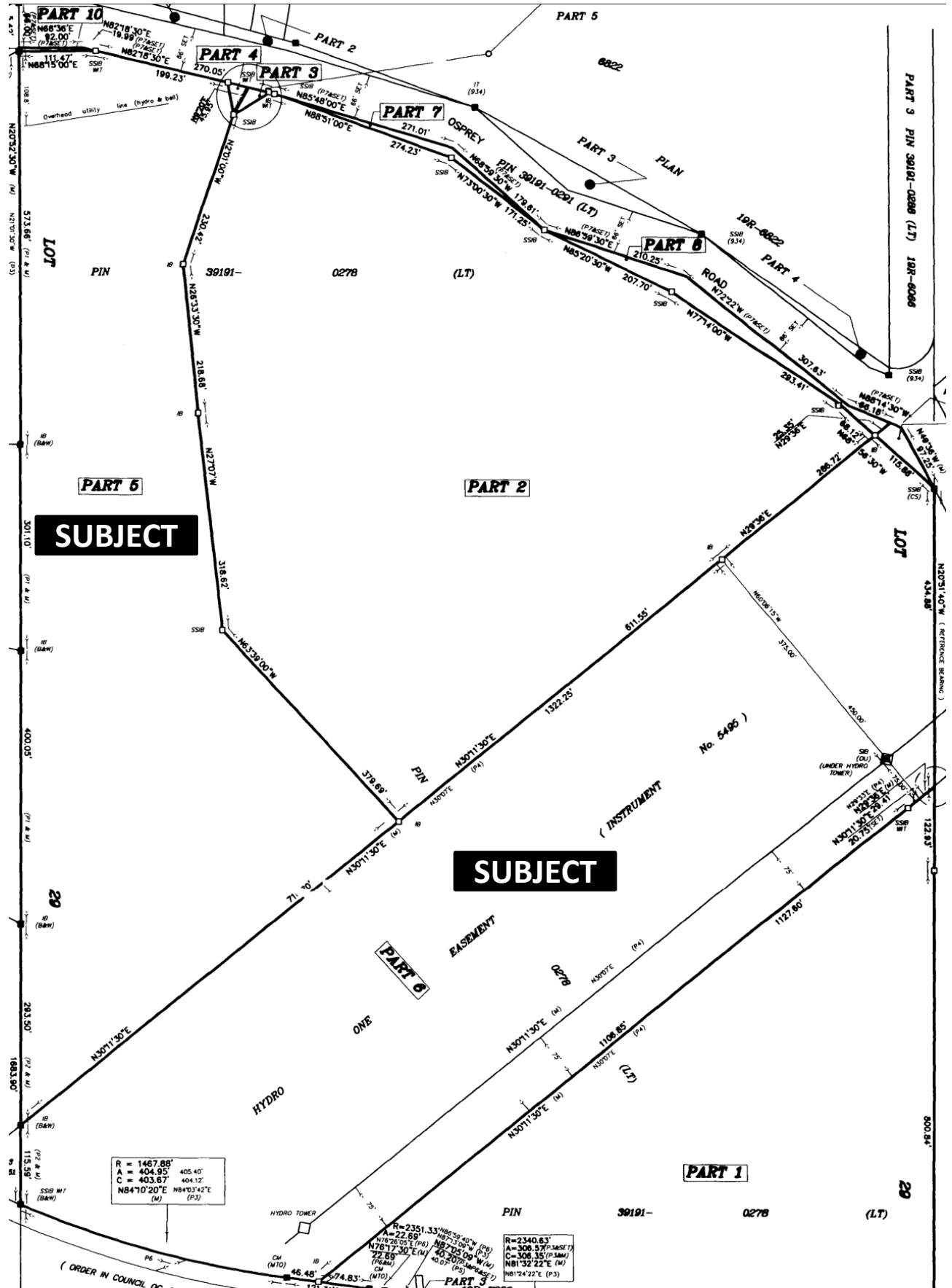
Information Package

Schedule "D" – Survey

Sellers Initials

Parts 4, 5 and 6, Plan 19R8686, Minden Hills

Buyers Initials



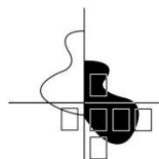
TOWNSHIP OF MINDEN HILLS

ZONING BY-LAW 06-10

February 23, 2006

Approved by the Ontario Municipal Board August 9, 2006

Office Consolidation
July 27, 2017



PLANSCAPE
Building Community Through Planning
Bracebridge, Ontario

RURAL ZONING POSSIBLE USES

Subject Property has RU-13 ZONING

Zone	Rural (RU)	Principal Uses		Principal Uses	
Principal Uses		Group Home, Open	X	Restaurant, Drive-through	
Aggregate stockpiling/storage		Health Care Centre		Retail store	
Arena		Hotel		Retirement home	
Asphalt Plant, Portable	X	Hunt camp (on crown lands)	X	Salvage yard	
Bank		Industrial use		Saw and/or planing mill	
Bed & Breakfast	X	Kennel, commercial	X(3)	School, commercial	
Boarding House	X	Laundromat, coin operated		School, public or private	
Building supply outlet		Marina		Service shop, light	
Bulk storage tank		Marine sales & service		Service shop, personal	
Business, professional or administrative office		Medical or dental clinic		Tourist establishment	
Camping establishment		Motor vehicle dealership		Transport Depot	
Cemetery	X	Motor vehicle service station		Veterinary clinic	X
Commercial Self Storage		Motor vehicle wash, automatic		Warehouse	
Community centre	X	Municipal Works depot		Waste disposal area	
Conservation	X	Park	X	Waste Recycling Facility	
Contractor's establishment		Pit		Wayside pit or quarry	X
Day care centre	X	Place of Assembly		Wholesale estab.	
Dry cleaning establishment		Place of Worship		Accessory Uses	
Dwelling, single detached	X	Portable processing plant			
Equestrian facility	X	Printing or publishing establishment		Bed & Breakfast Establishment	X
Equipment sales & rental, heavy		Public use	X	Dwelling Unit, accessory	
Equipment sales & rental, light		Quarry		Home Industry	X
Farm	X	Recreational Institution		Home Occupation	X
Farm Produce Outlet	X	RV sales & service		Outside Display	
Funeral Home		Resort		Private Home Day Care	X
Garden Centre & nursery	X	Restaurant		Retail store	
Golf course					
Golf driving range					
Greenhouse, commercial	X				

SUBJECT PROPERTY ZONING is RU-13

07-59

5.4.3.13 Rural Exception Thirteen (RU-13) Zone
Part of Lot 29, Concession 7, Minden, Schedule 8

On the lands zoned Rural Exception Thirteen (RU-13), a dwelling unit is not permitted to be constructed within 300 metres of the normal high water mark of Soyers Lake All other applicable provisions of the Rural (RU) Zone shall continue to apply.

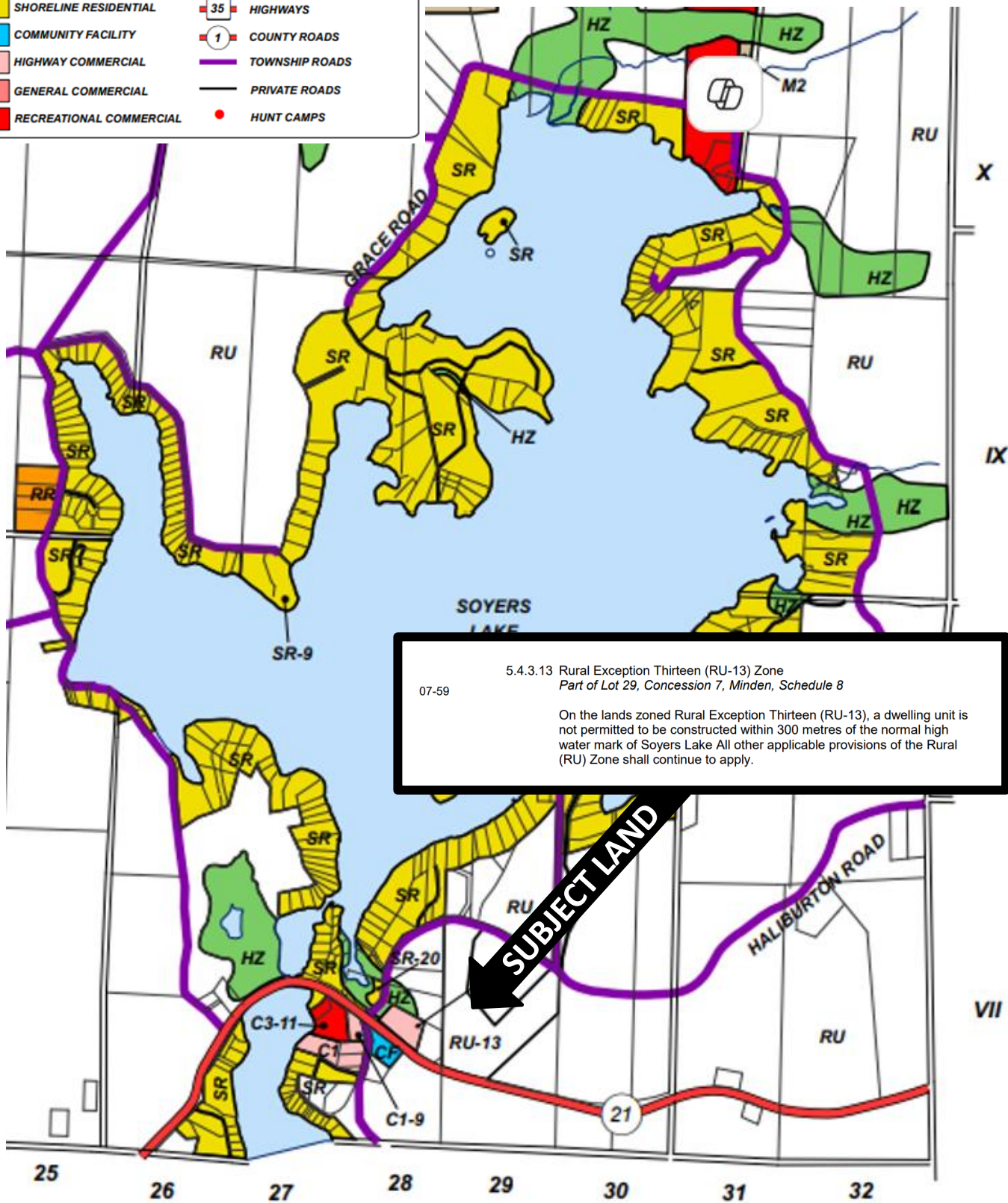
This is for "General Information Purposes ONLY"

It is NOT THE ACTUAL OFFICIAL Township of Minden Hills Zoning By-Law 06-10 guide but has been copied for ease of reading and understanding of what applies to the subject property.

IT IS UP TO THE BUYER AND THEIR AGENT TO INQUIRE DIRECTLY WITH THE TOWNSHIP TO VERIFY THIS ZONING AND ZONING BY-LAW FOR BUILDING PURPOSES.

LEGEND

HZ	HAZARD LAND	C4	VILLAGE COMMERCIAL
FW	FLOODWAY	M1	GENERAL INDUSTRIAL
OS	OPEN SPACE	M2	EXTRACTIVE INDUSTRIAL
RU	RURAL	M3	WASTE DISPOSAL INDUSTRIAL
HR	HAMLET RESIDENTIAL		LOTS-CONCESSIONS
RR	RURAL RESIDENTIAL	35	HIGHWAYS
SR	SHORELINE RESIDENTIAL	1	COUNTY ROADS
CF	COMMUNITY FACILITY		TOWNSHIP ROADS
C1	HIGHWAY COMMERCIAL		PRIVATE ROADS
C2	GENERAL COMMERCIAL		HUNT CAMPS
C3	RECREATIONAL COMMERCIAL		



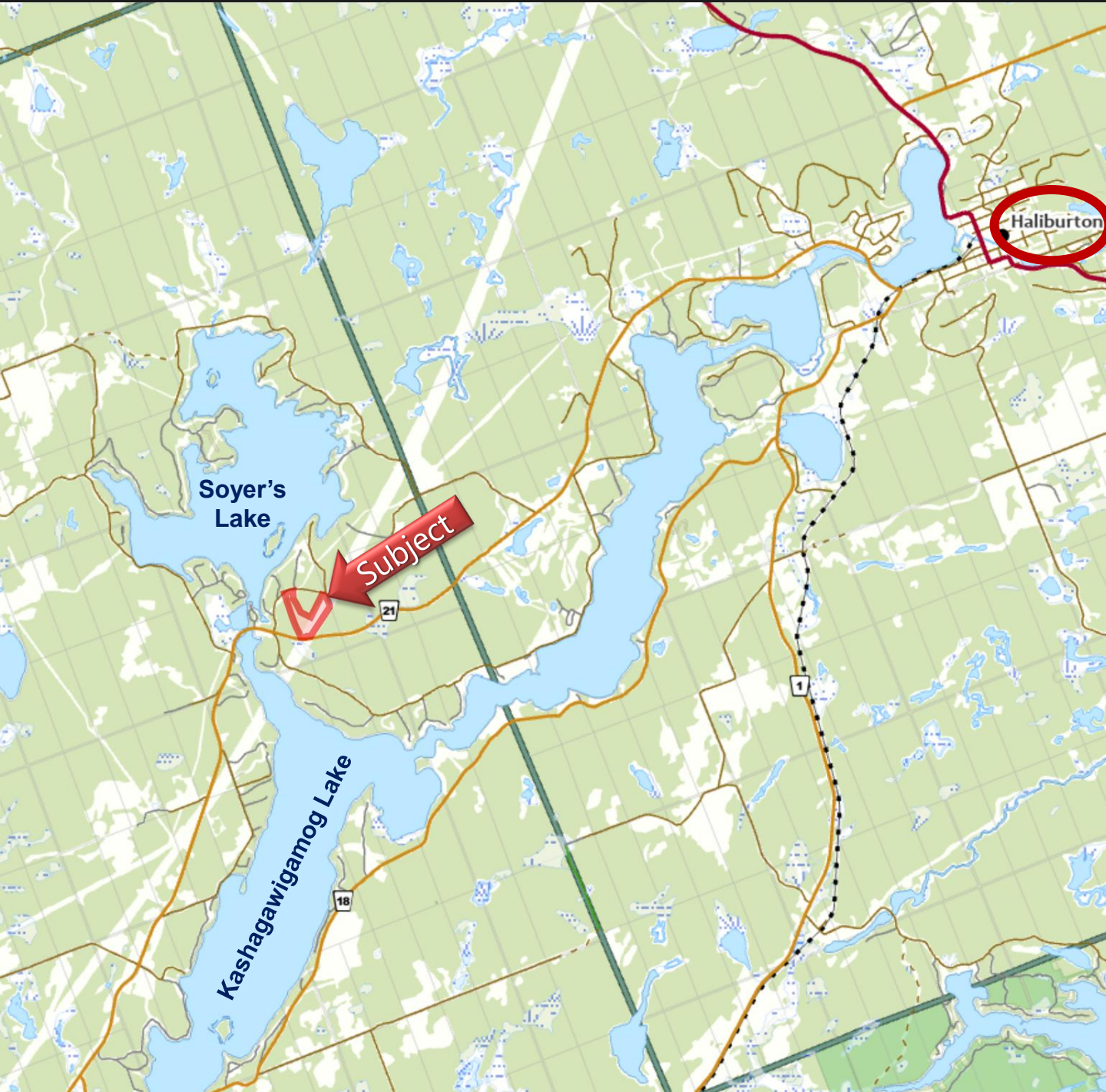
Location Map

Osprey Road, Haliburton



Location Map

Osprey Road, Haliburton



Area Map

Osprey Road, Haliburton

