

1083 Sharon Lake Drive



Sharon Lake
Haliburton Highlands

From The Air...



View from Over the Lake



Shallow Entry Shoreline



Large Level Areas



The Drone Perspective



Upper Photo – Picture taken from the road

Lower Photo – Picture taken high over the back part of the land



Aerials of the Lake



At The Lake



More



PART 11 Plan RD66, Glamorgan Township
Subject to a Right of Way and Hydro Line crossing

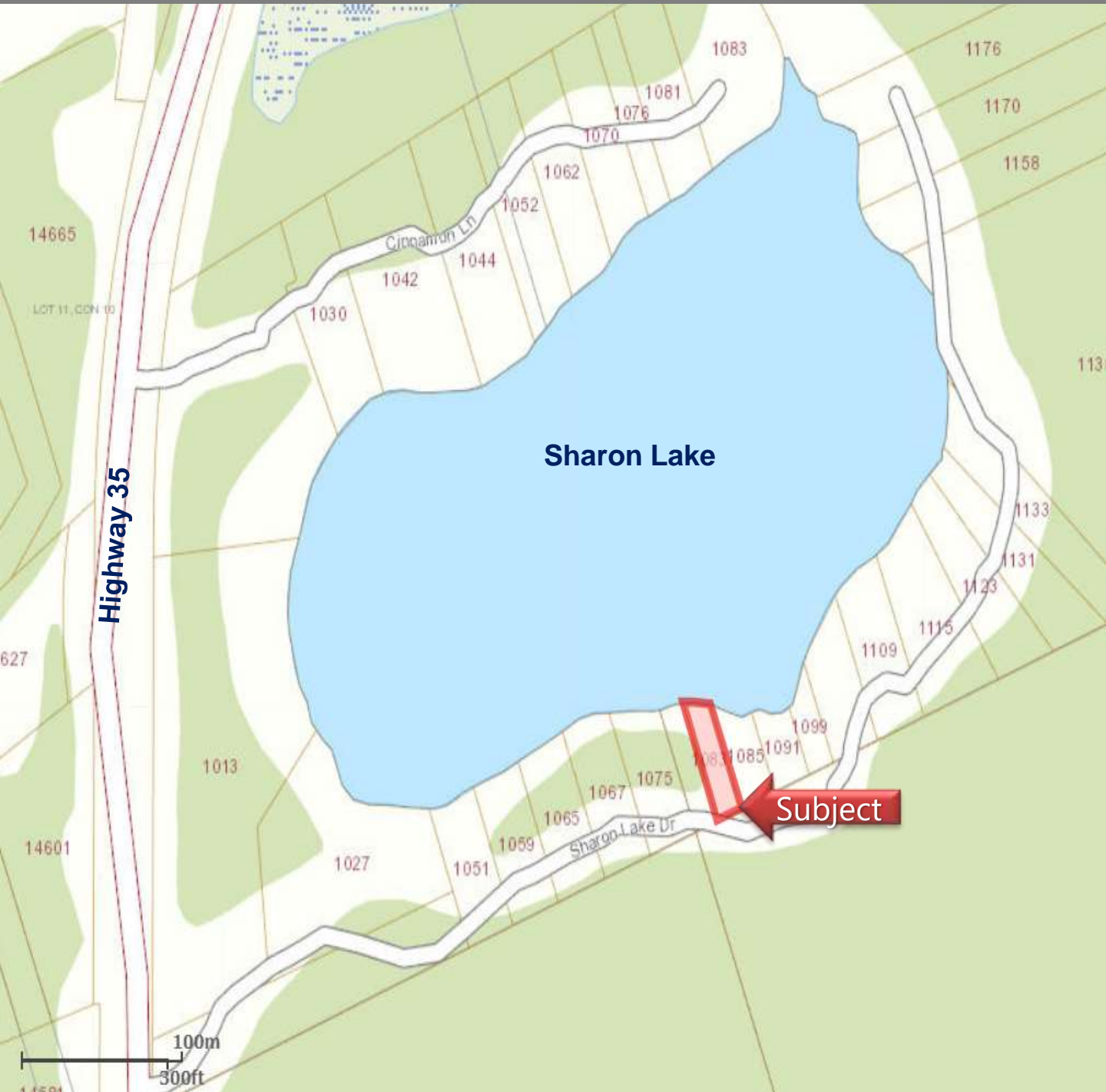
Subject to a Right of Way and Hydro Line crossing

The map shows Lot 12, Con. X, divided into Part 1 and Part 2. Key features include:

- Lot 12, Con. X:** The main area being surveyed, with a 'Subject' label over Part 1.
- Part 1:** The upper portion of the lot, containing a 'POLE LINE' and 'ROAD'.
- Part 2:** The lower portion of the lot, containing a 'POLE LINE' and 'ROAD'.
- Sharon Lake:** Located to the north of the lot, with a 'WATER MARK' indicated.
- Survey Points:** PD 17 (1755), PD 18 (1755), and PD 19 (1755) are marked on the map.
- Measurements:** Various bearings and distances are provided for the boundaries, such as N20°32'W (101), N20°49'W (101), and N78°38'E (50.48).
- Other Labels:** 'CON.', 'INST.', 'C/L EXISTING', 'ROAD', 'POLE LINE', 'X', and 'IX' are also present.

Exact Location Map

1083 Sharon Lake Drive, Sharon Lake



Area Map

1083 Sharon Lake Drive, Sharon Lake



Location From GTA

1083 Sharon Lake Drive, Sharon Lake

